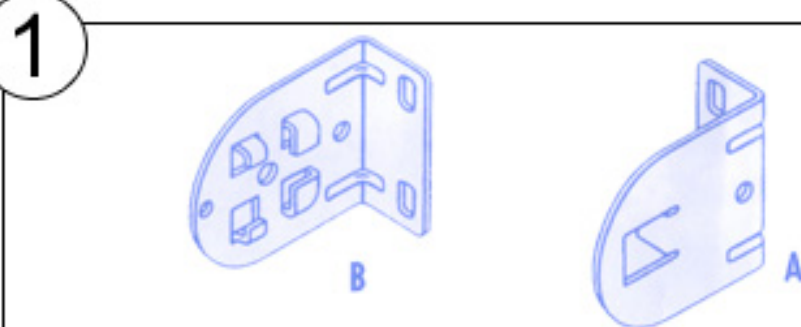
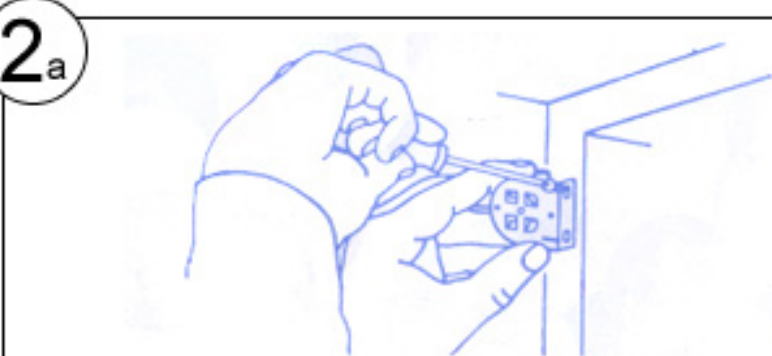


Fitting

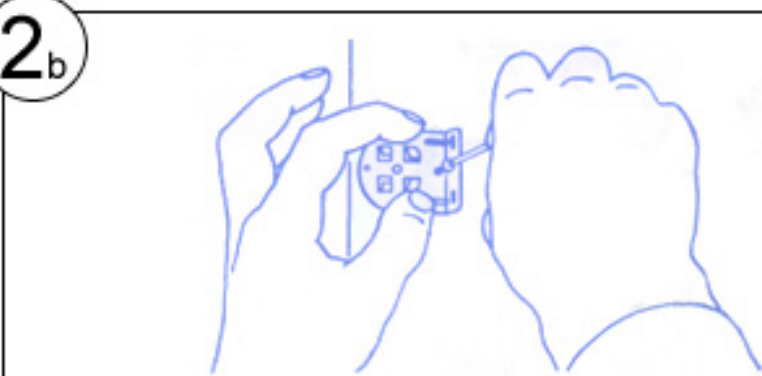
Roller blinds are designed for easy DIY fixing using a tape measure, drill and screwdriver. However, it is important to measure the position of the brackets accurately. Before fixing, first measure the distance between the outside edges of the brackets by placing the complete blind in the brackets (drawings 1,3,4,5) and holding it tight in position. Add 2mm to this dimension to allow 2mm play for ease of operation. Mark the position of the first bracket, then measure the distance referred to above including the 2mm tolerance. This will give the position of the second bracket. Fix the brackets as indicated, making sure they are level.



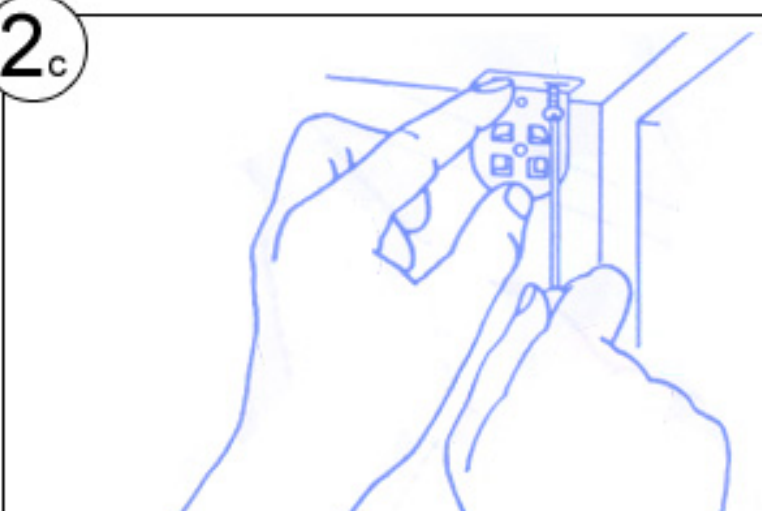
Normally the cord control (rollacord) end is located on the right hand side, but it can also be placed on the left. The A bracket is always used for the rollacord mechanism and the B bracket is placed at the opposite (pin) end.



The brackets can be fitted in 3 different ways using the screws provided (wall plugs will be required if not fixing into wood). The can be used for face fixing.

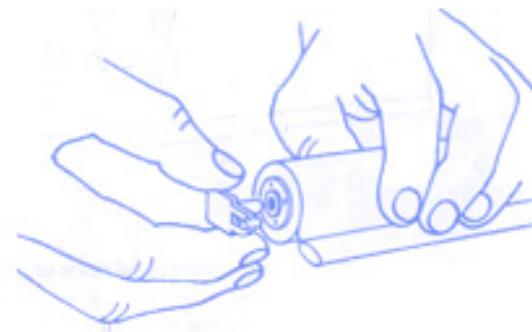


Side Fixing



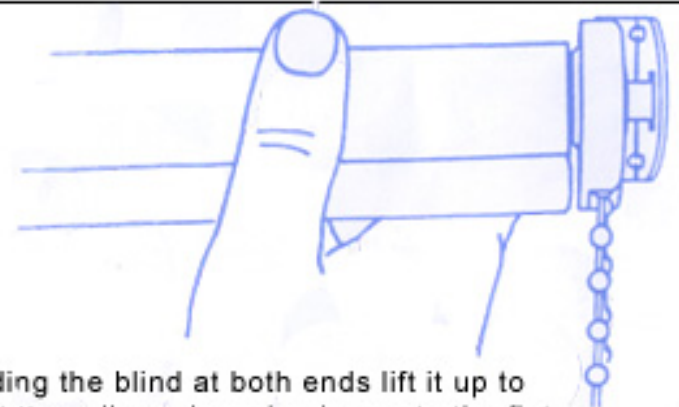
Top Fixing

3



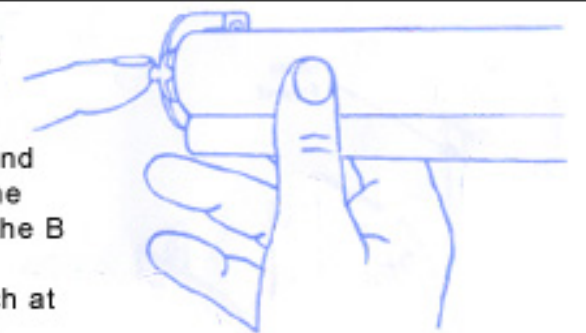
Before the roller blind is placed in the brackets, insert the small plastic pin / locking plate into the end of the roller blind with the round hole.

4



Then carefully holding the blind at both ends lift it up to the brackets and fit the rollacord mechanism onto the flat pin of the A bracket.

5

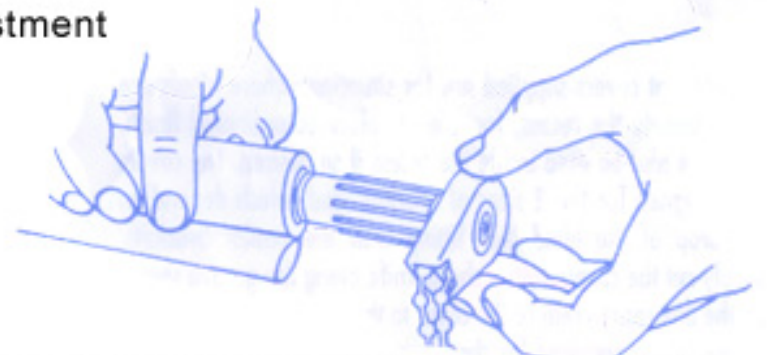


At the other end of the blind push the square part of the plastic locking plate into the B bracket until the locking button clicks into the notch at the front of the B bracket.

To reverse the process to take the blind down, push the locating button out of the notch using the blade of a small screwdriver, and then slide the plastic locking plate out of the metal bracket.

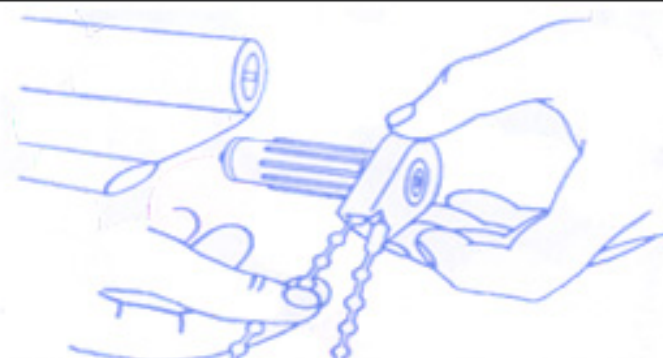
6

Adjustment



In order to adjust the top stop on the rollacord mechanism, take the blind out of the brackets and pull the unit from the end of the tube

7



Unroll the blind to the point where it is required to stop. Pull the ball chain joint up to the stop at the back of the rollacord mechanism, insert the unit back into the tube and refit the blind